

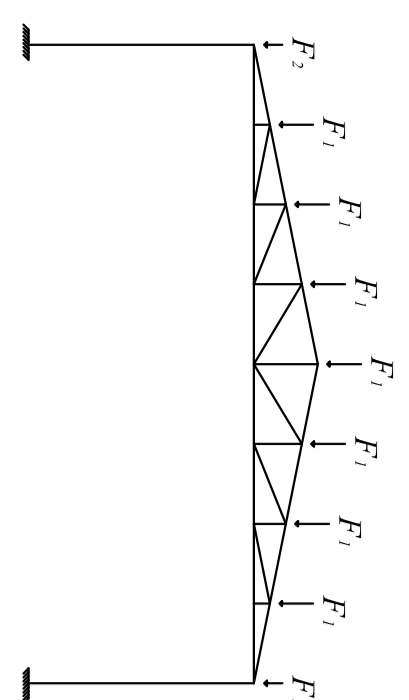
Combinazioni di carico (scala 1:200)

Combinazione di carico a)

$$F_1 = 1117 \text{ kg}$$

$$F_2 = 558 \text{ kg}$$

$$p_1 = p_2 = 0$$

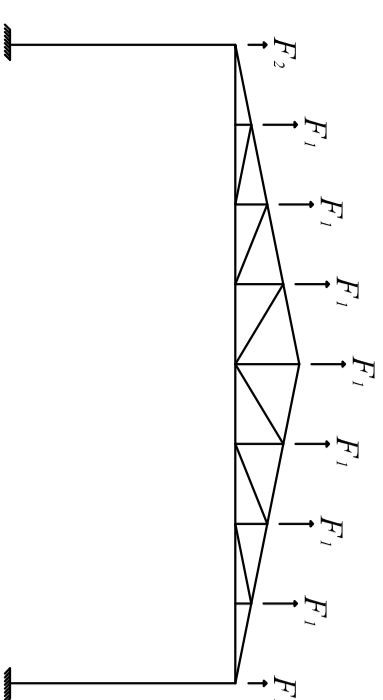


Combinazione di carico b)

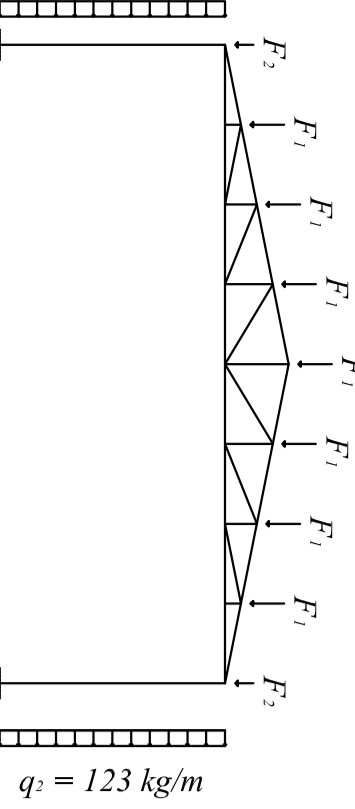
$$F_1 = 257 \text{ kg}$$

$$F_2 = 128 \text{ kg}$$

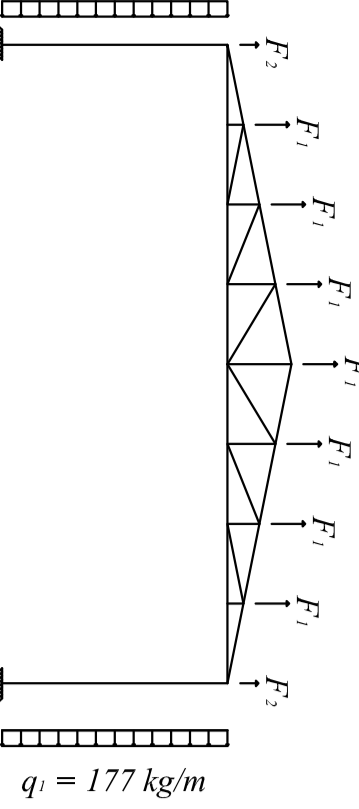
$$p_1 = p_2 = 0$$



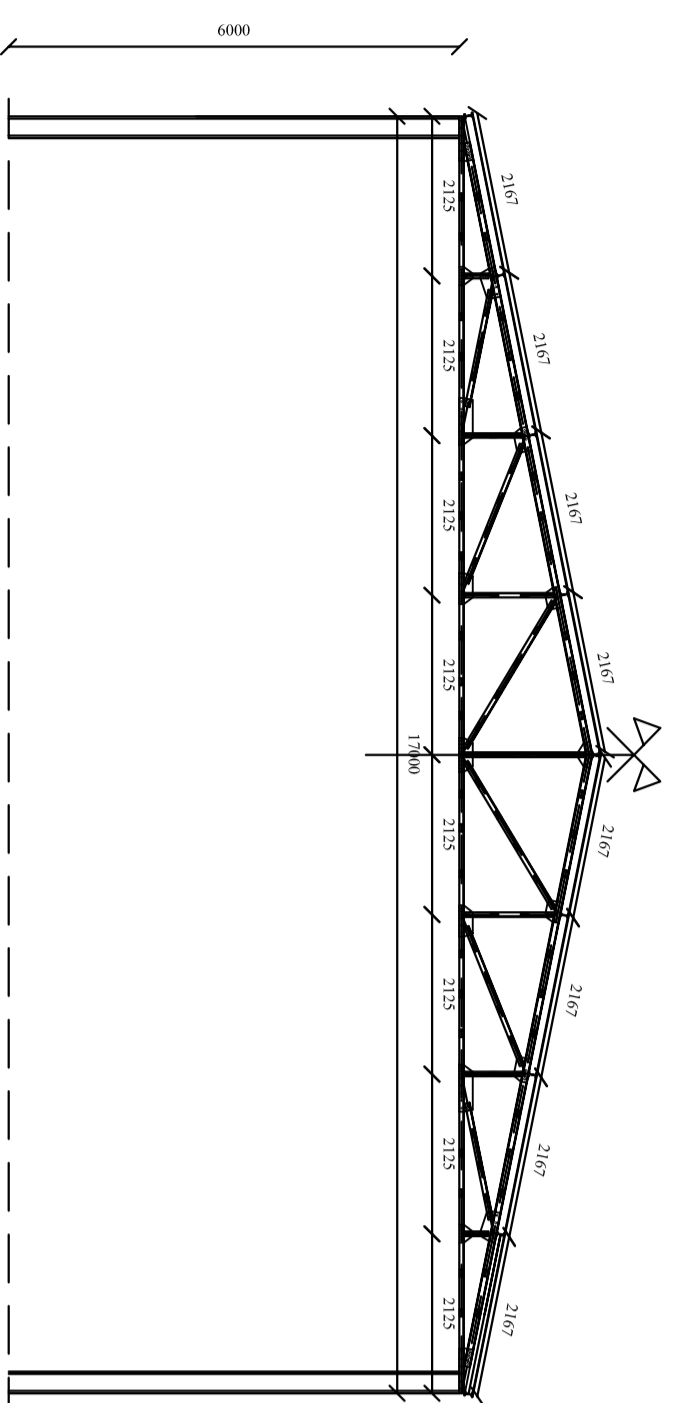
Combinazione di carico c)



Combinazione di carico d)



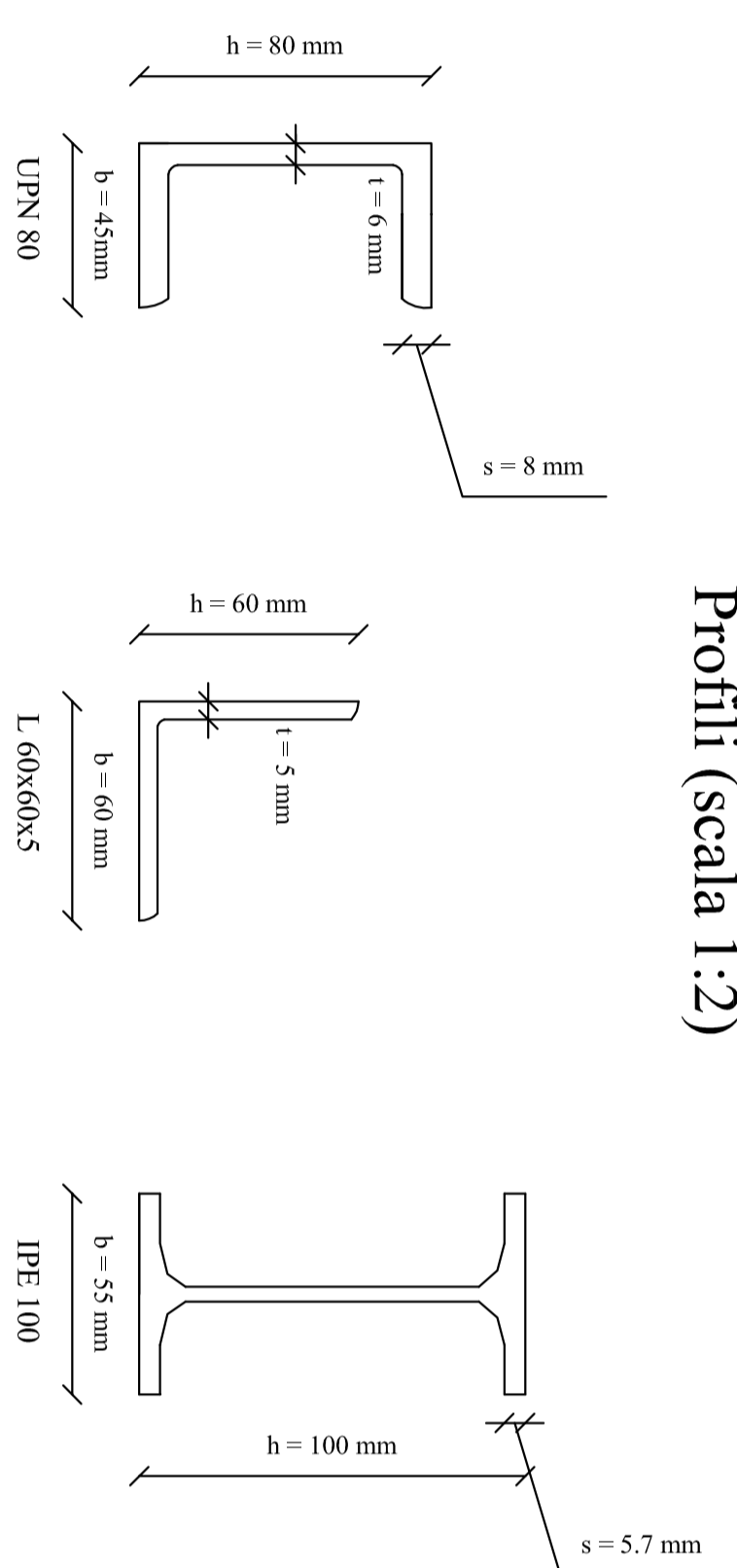
Sezione trasversale (scala 1:100)



| Tabella materiali asse | | |
|---------------------------|-----------|---------|
| Tipo asse | Profilo | Acciaio |
| Corrente sup. | UPN 80 | Fe 430 |
| Corrente inf. | L 60x60x5 | Fe 430 |
| Diagonali | L 60x60x5 | Fe 430 |
| Montanti | L 60x60x5 | Fe 430 |
| Controvento di falda | L 60x60x5 | Fe 430 |
| Controvento longitudinale | L 60x60x5 | Fe 430 |

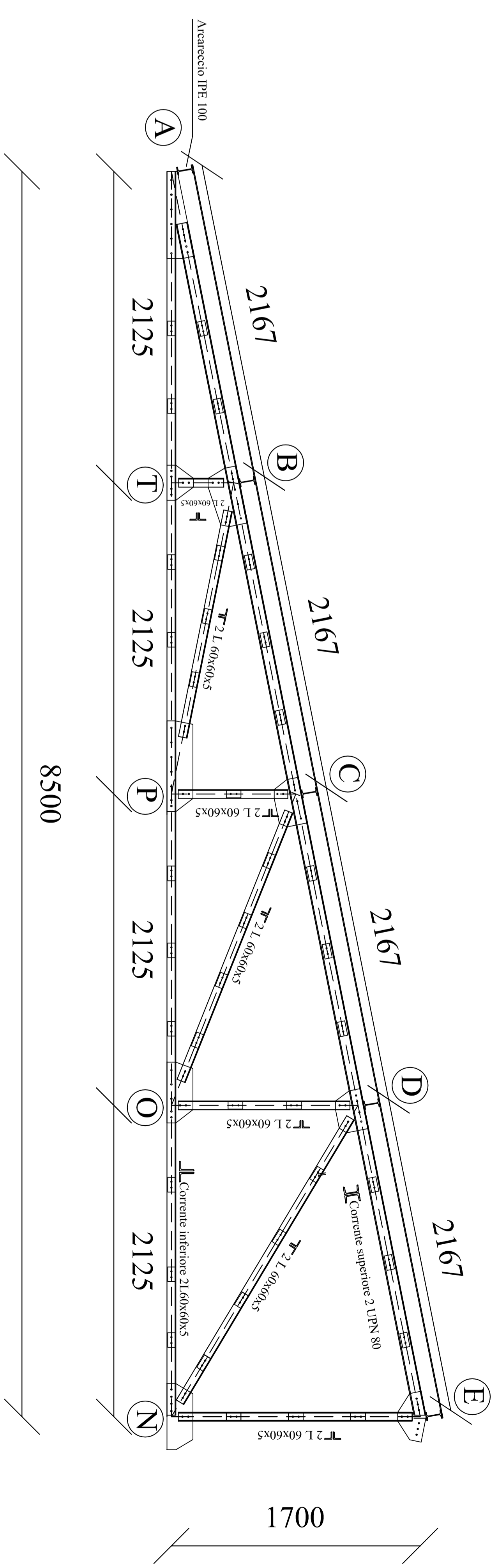
| Tabella bulloni | | |
|-----------------|--------|--|
| Diametro (mm) | classe | |
| 12 | 5,6 | |
| 16 | 5,6 | |

Profili (scala 1:2)

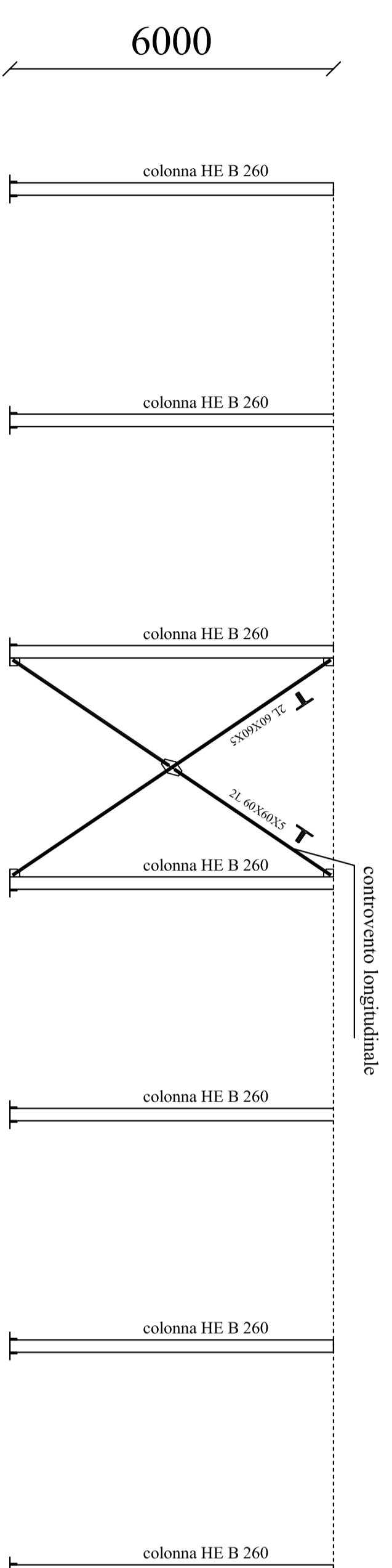


Capriata (Scala 1:20)

misure in mm



Carpenteria longitudinale (scala 1:100)

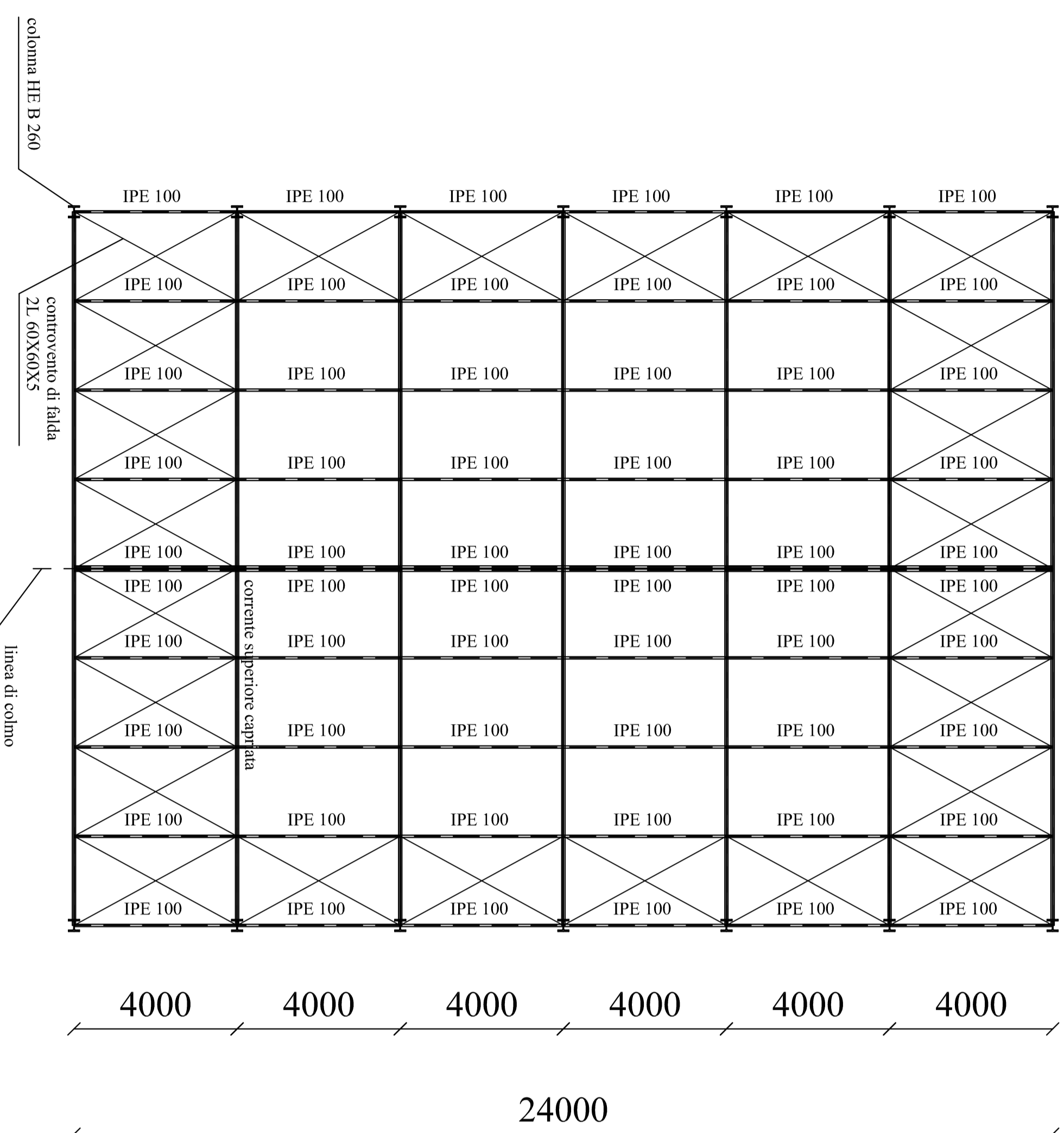


Carpenteria Copertura (scala 1:100)

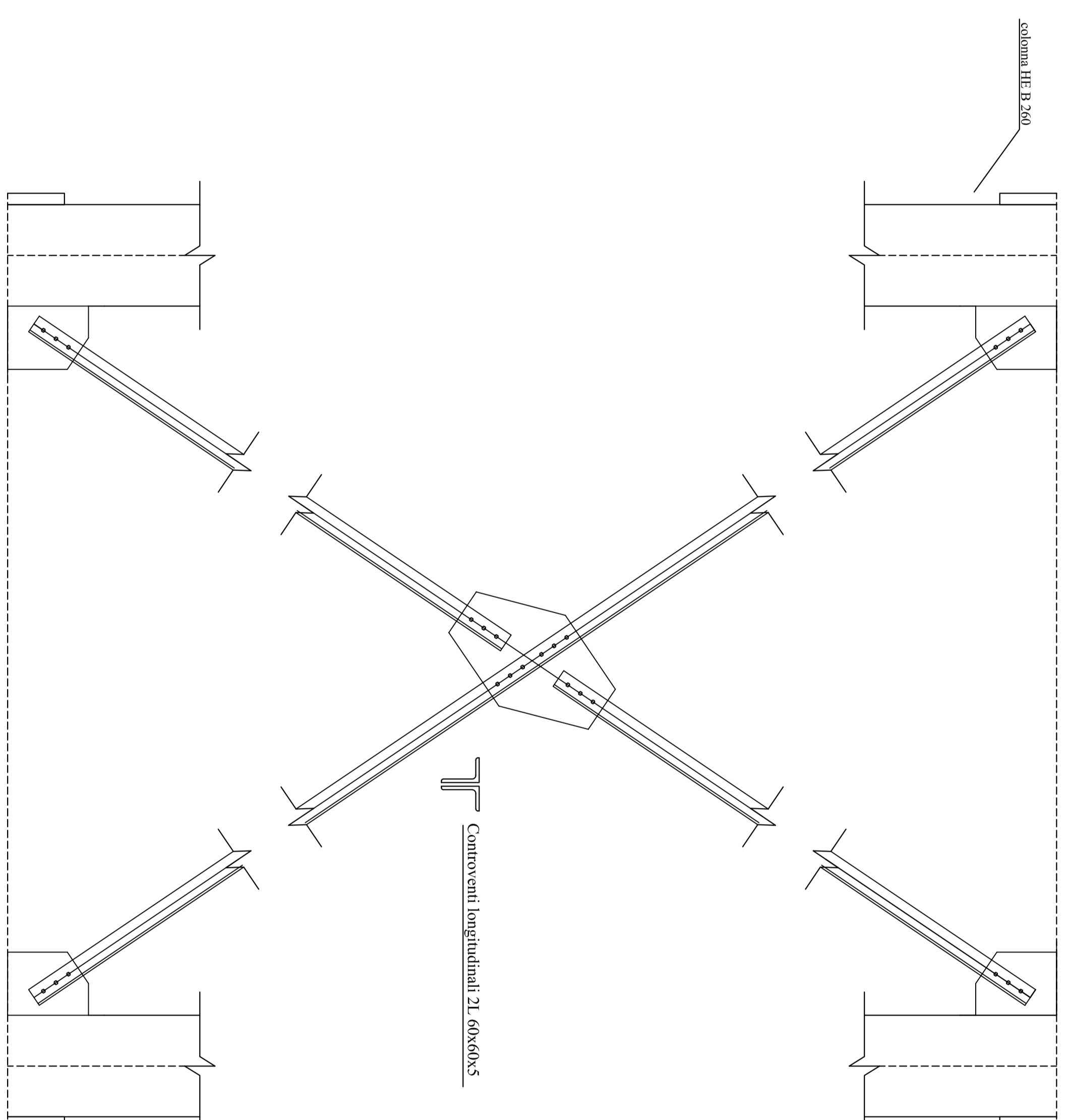
misure in mm

B = 17000

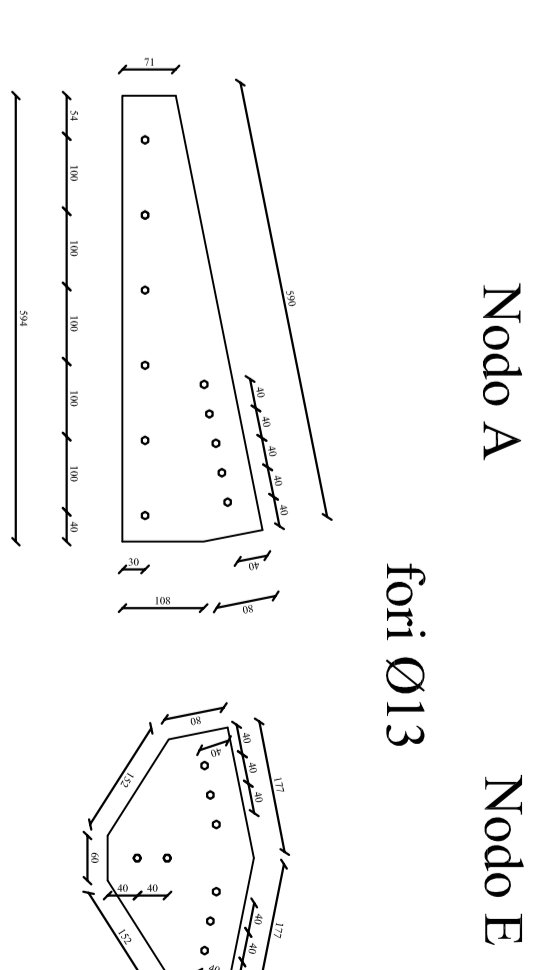
2125 2125 2125 2125 2125 2125 2125 2125



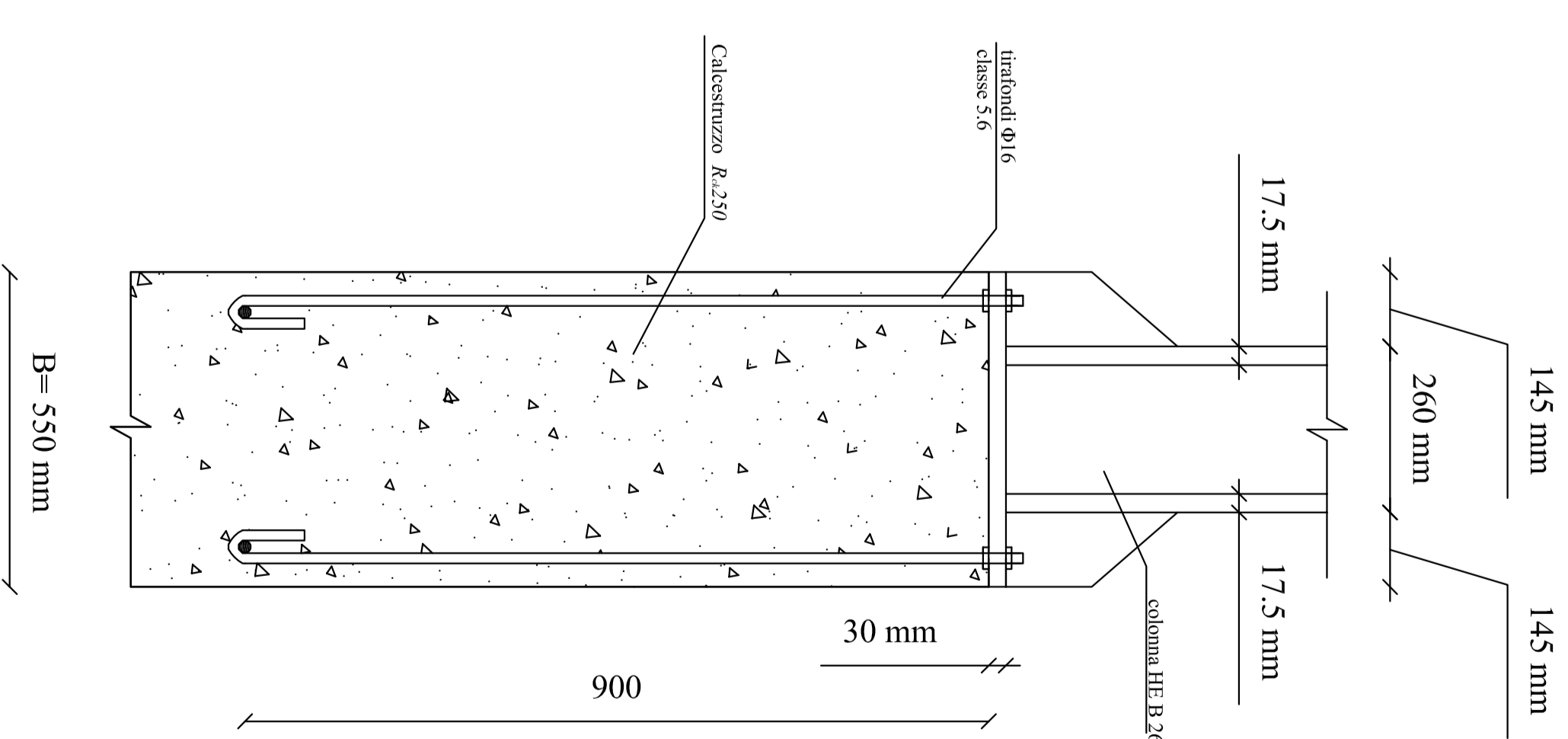
Dettagli controvento longitudinale (scala 1:10)



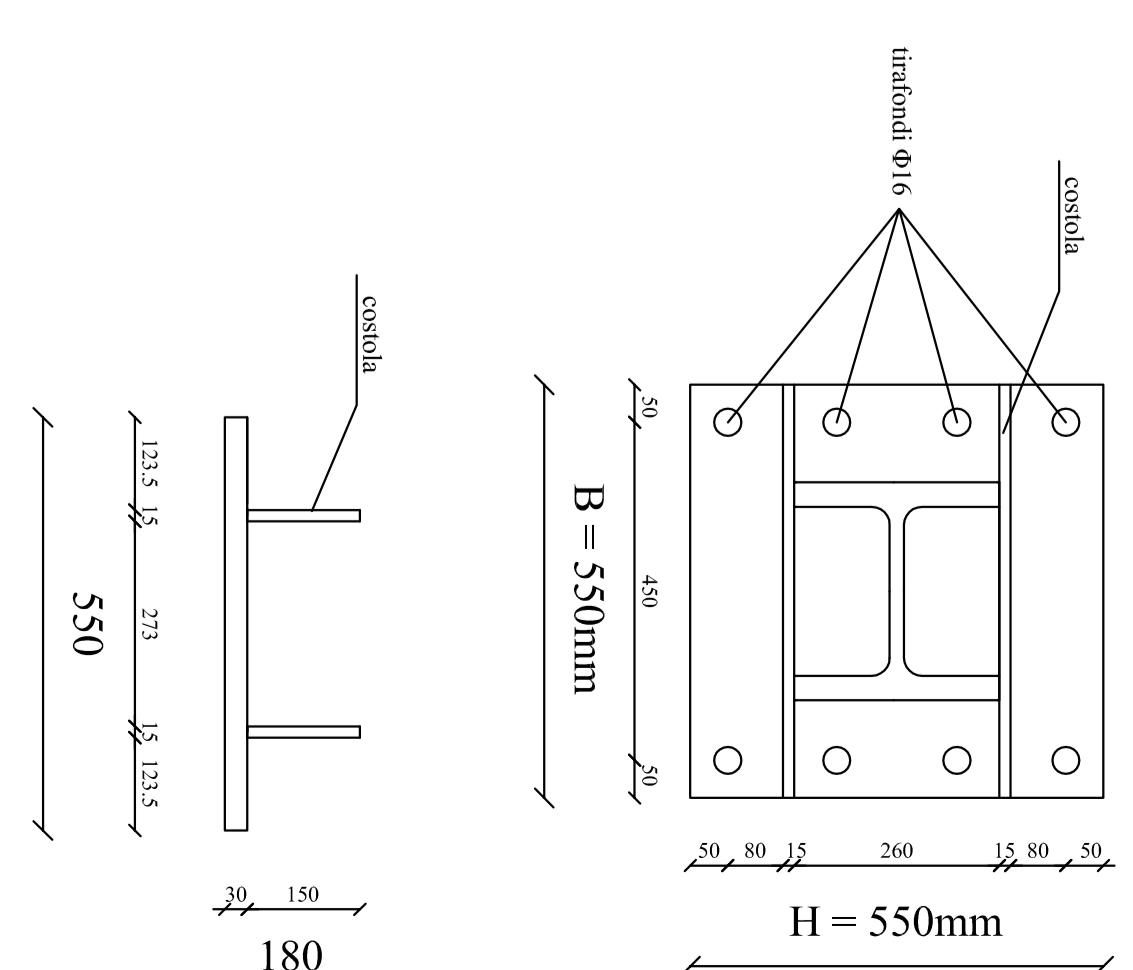
Fazzoletti (scala 1:10)



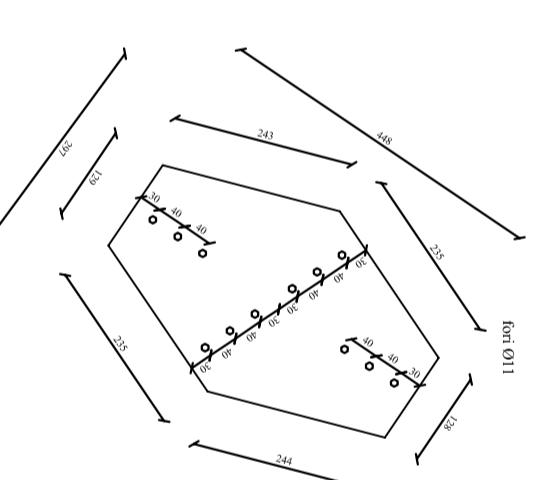
ATTACCO RITTO HE B 260 - FONDAZIONE (scala 1:10)



DETTAGLI PIASTRA COLLEGAMENTO (scala 1:10)



Piastro intermedio diagonale (Scala 1:10)



UNIVERSITA' DEGLI STUDI DI NAPOLI "FEDERICO II"



FACOLTA' DI INGEGNERIA

Corso di Laurea in Ingegneria Gestionale dei Progetti e delle Infrastrutture

**Dipartimento di Ingegneria Strutturale
Corso di Gestione e Manutenzione
delle Strutture**

Anno Accademico 2007/2008

Elaborato 1: Edificio industriale in acciaio

Docente:
Prof. Ing. E. Nigro
Collaboratore:
Ing. A. Biolotta