

SPECIE

Numero cromosomi (2n)

Suino e gatto

38

Uomo

46

Bufalo di palude

48

tipo Swamp

Bufalo di fiume

50

Tipo River

Pecora

54

Bovino e capra

60

Asino

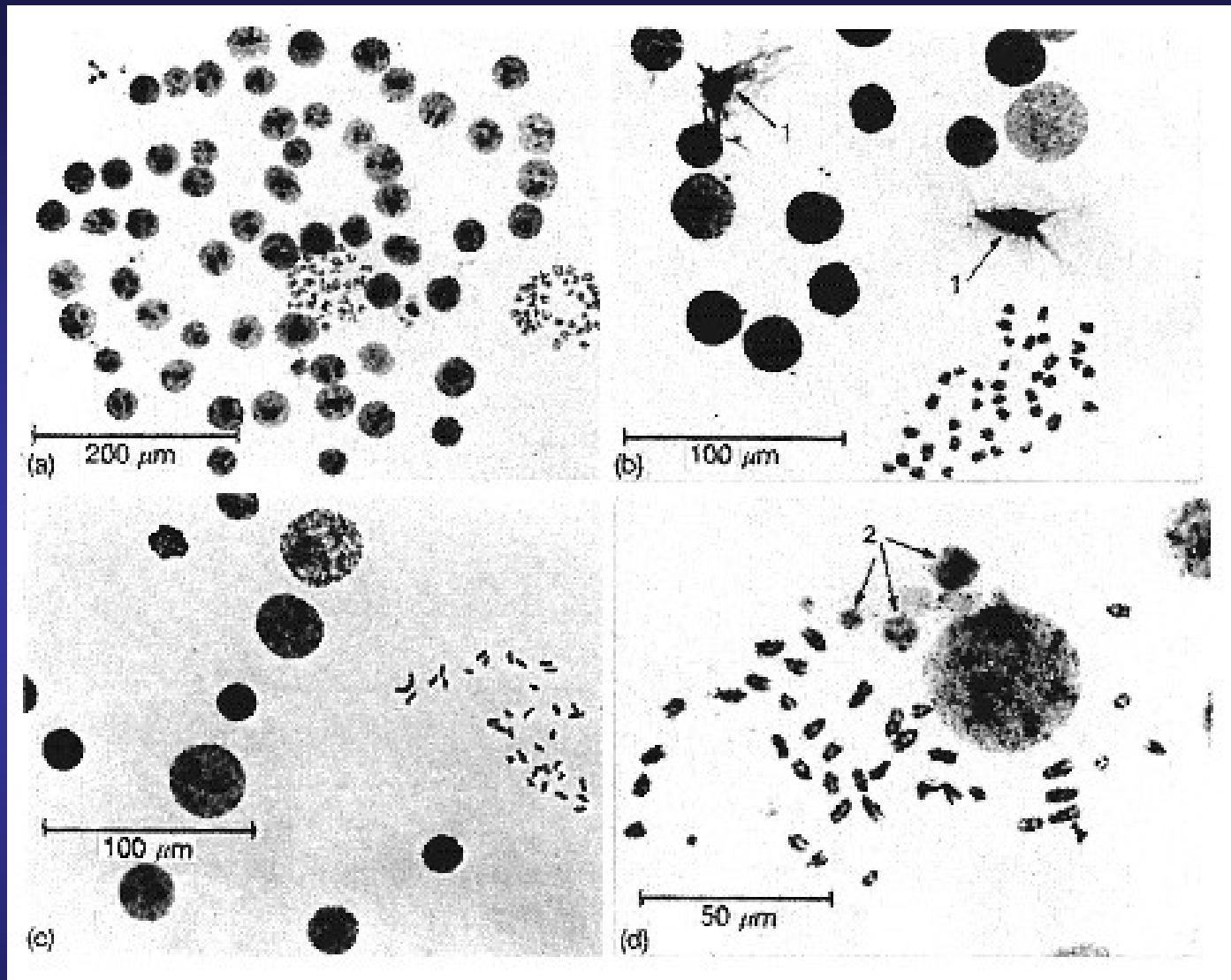
62

Cavallo

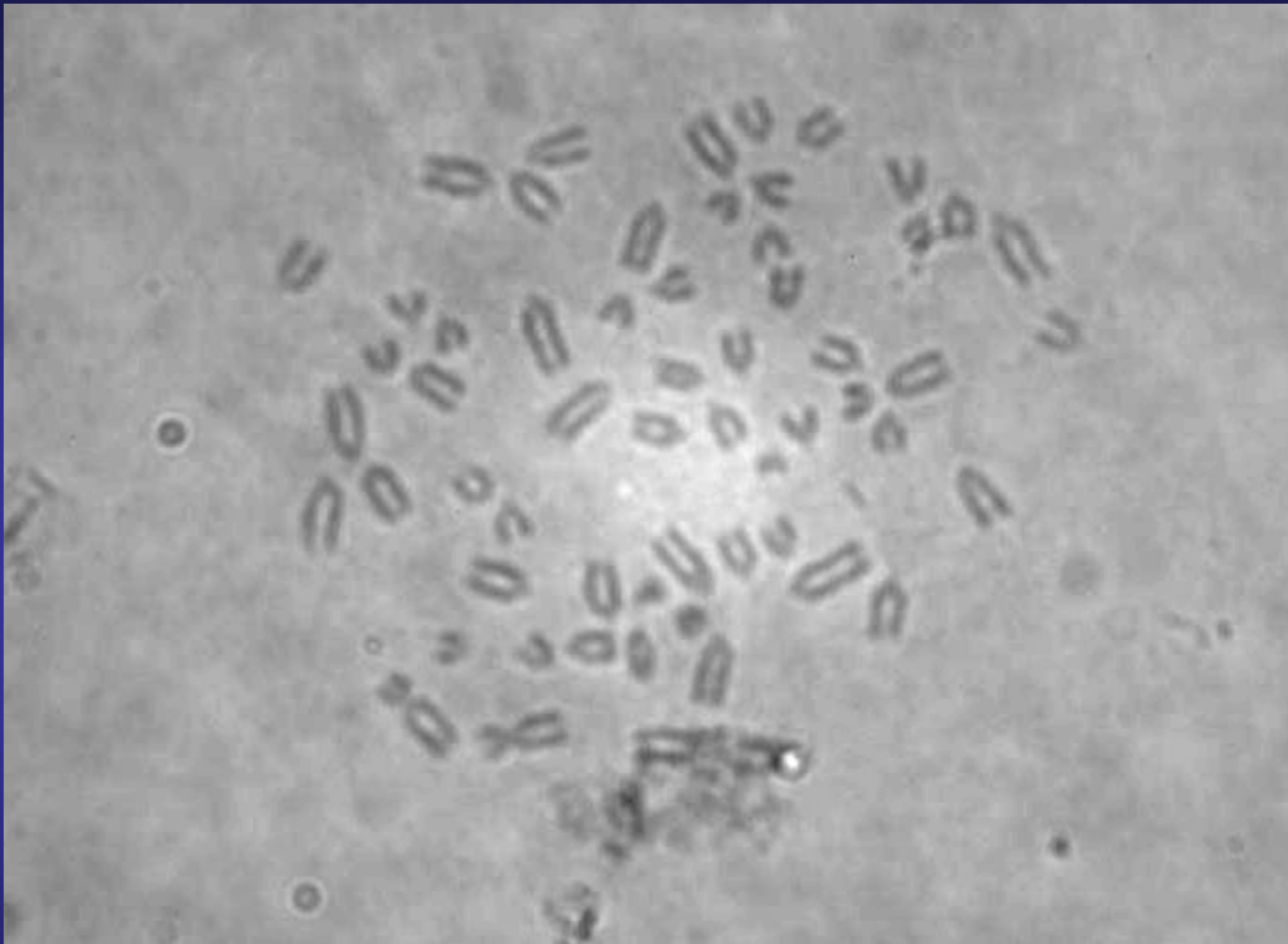
64

Cane

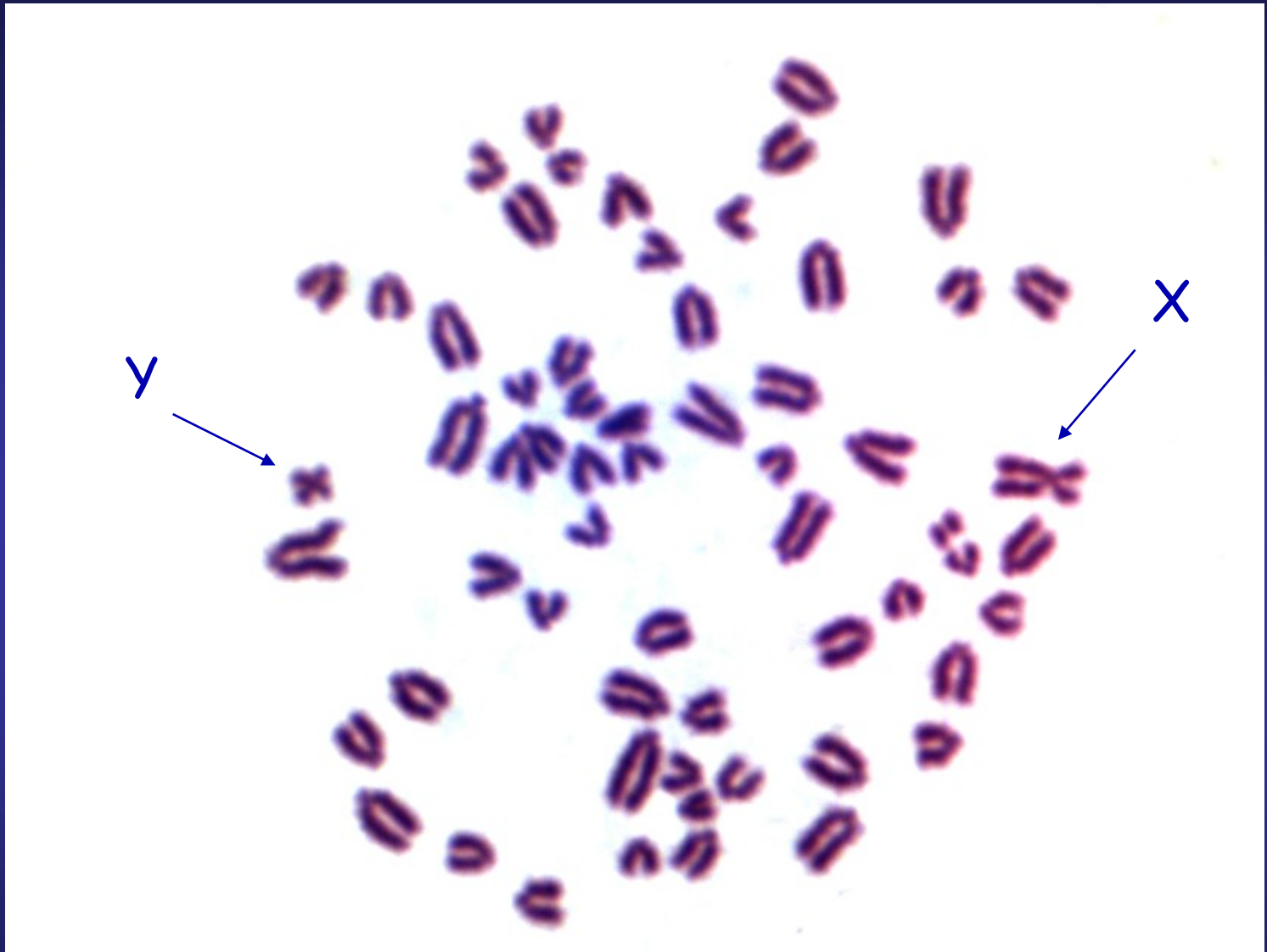
78



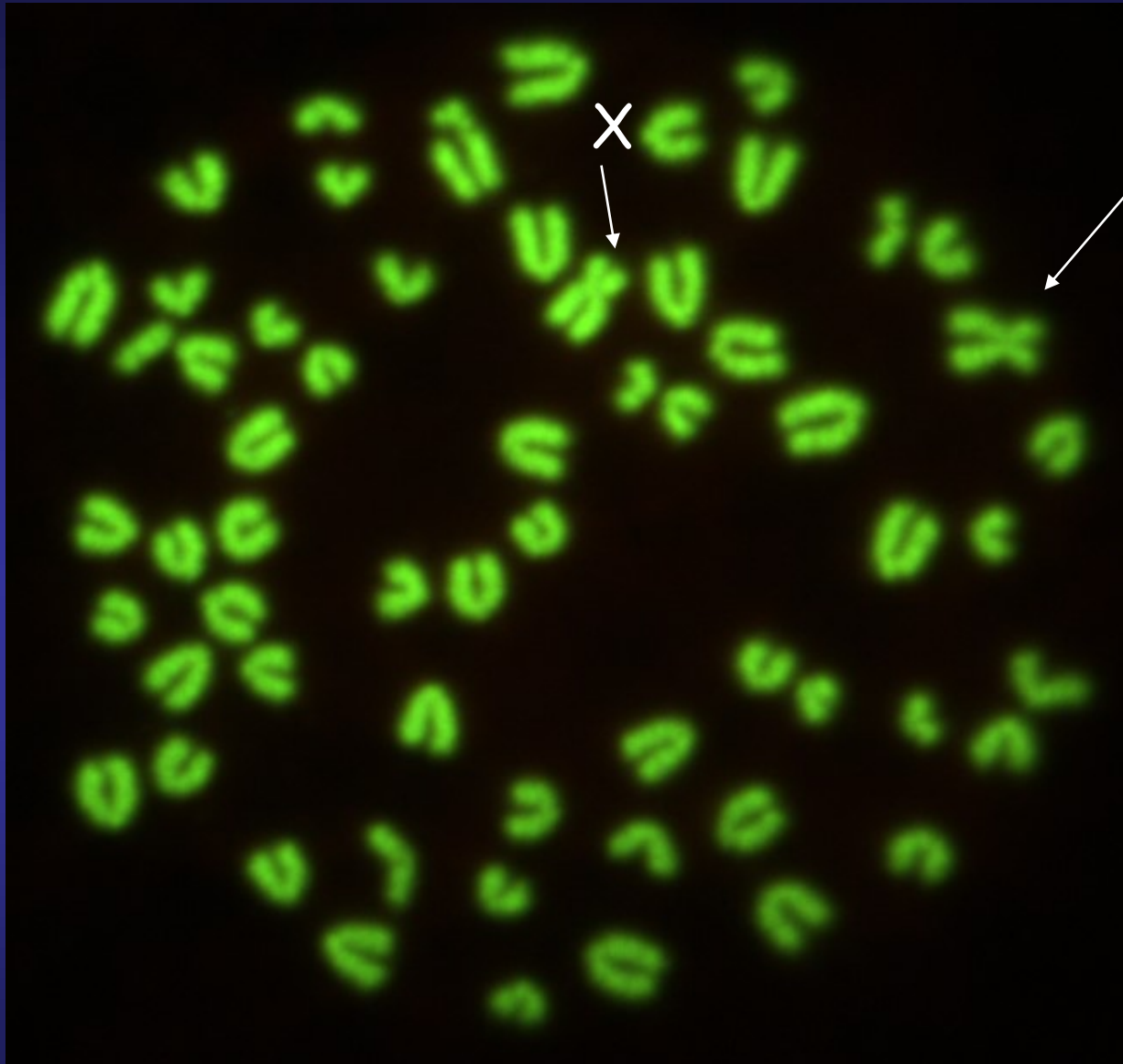
Piastre metafasiche con nuclei in interfase



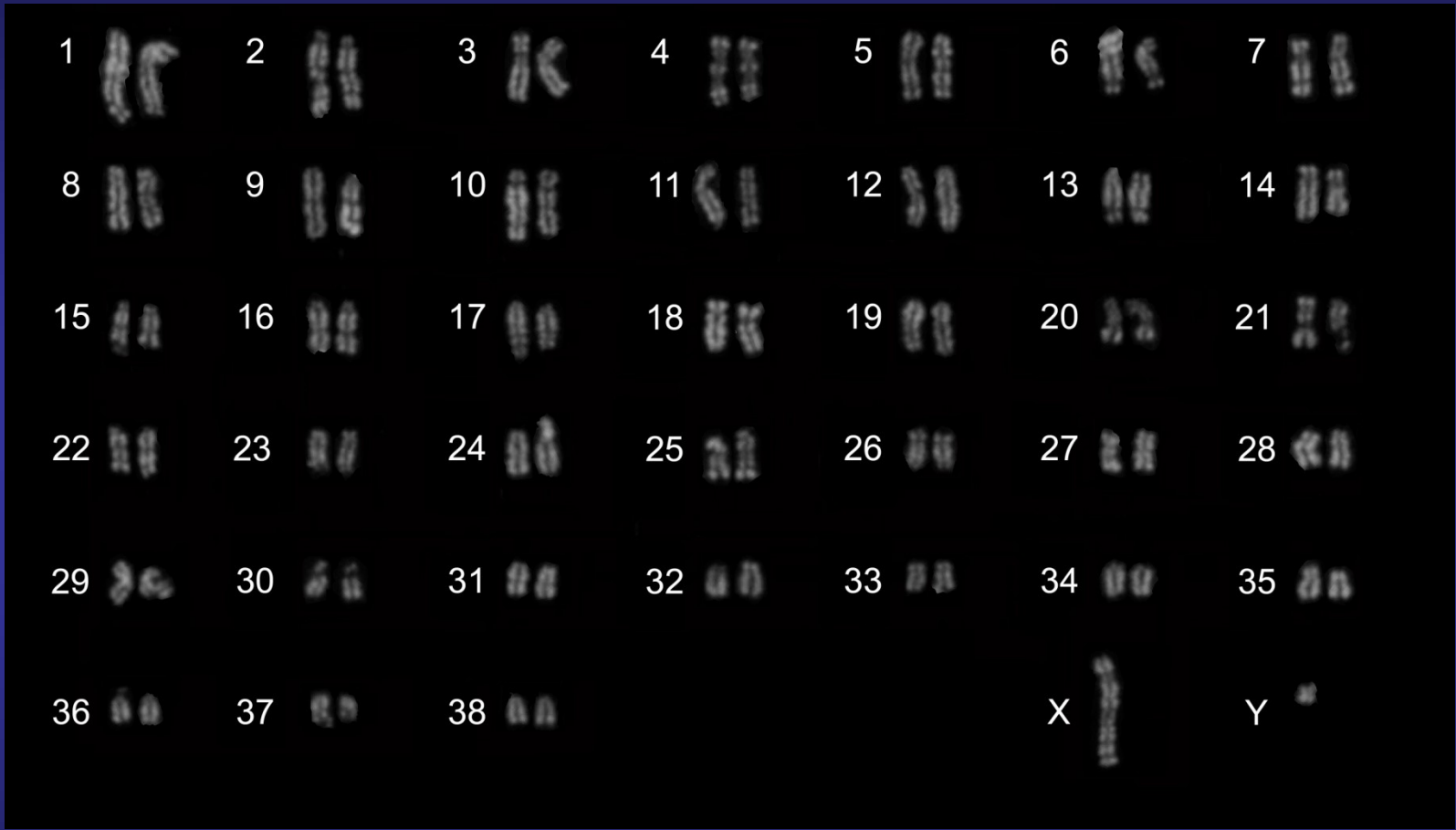
Piastra metafasica di bovino $2n=60$, XX, acquisita in contrasto di fase, 100x



Piastra metafásica di bovino $2n = 60, XY$; GIEMSA



Piastra metafasica di bovino $2n = 60$, XX; Arancio d'acridina



Cariotipo di cane ($2n=78$)