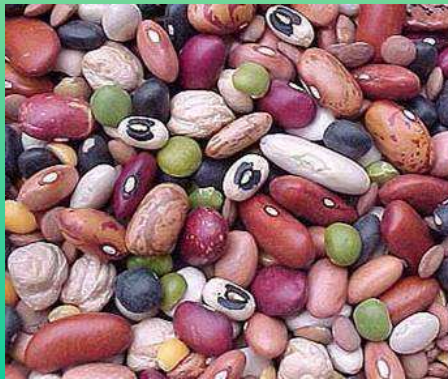




Corso in Tecnologie Alimentari

ELEMENTI DI BIOLOGIA GENERALE E VEGETALE

Fabaceae

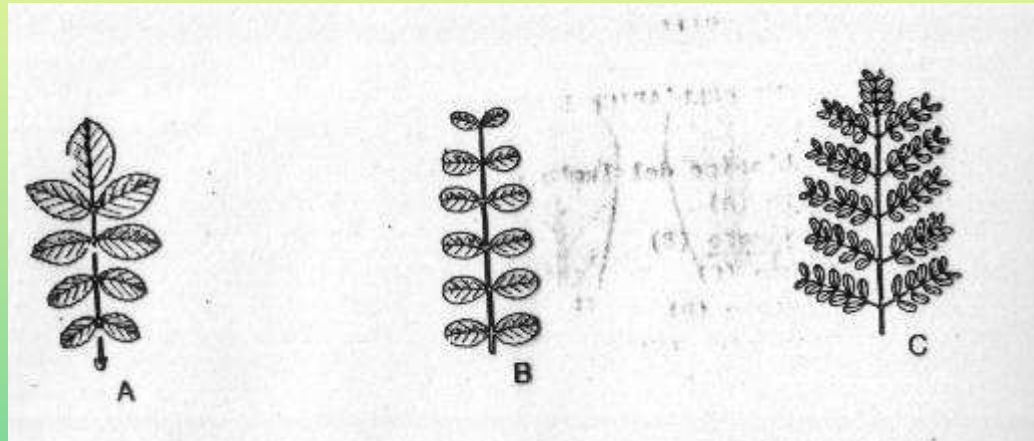


Università degli Studi di Napoli *Federico II*
Dipartimento di Agraria



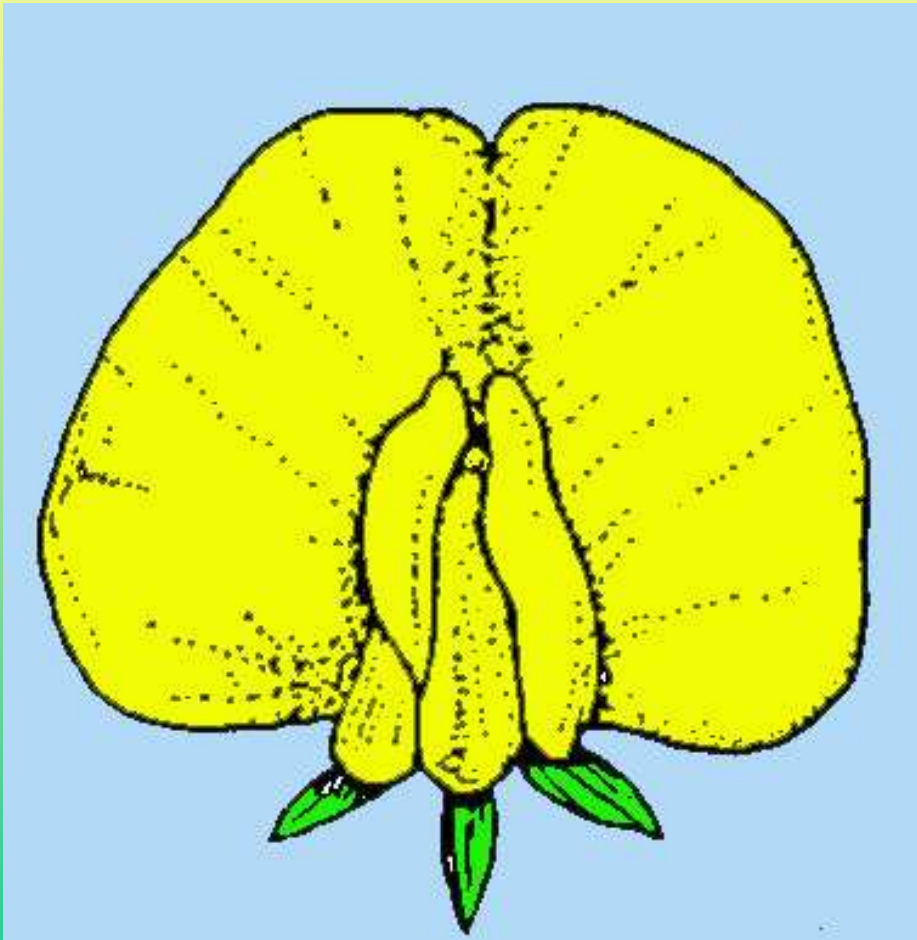
Fam. Fabaceae

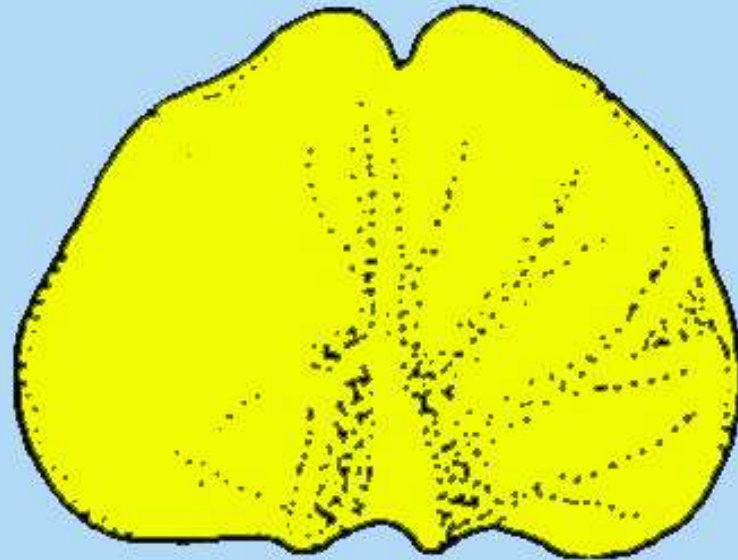
Foglie: composte, raramente semplici



Fam. Fabaceae

Fiori: pentameri, zigomorfi a corolla papilionacea

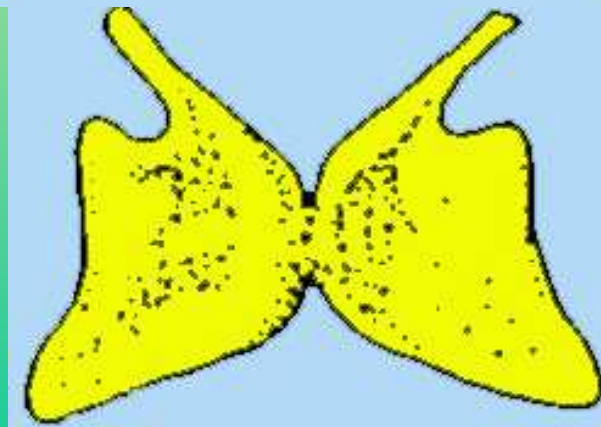




Vessillo



Ali

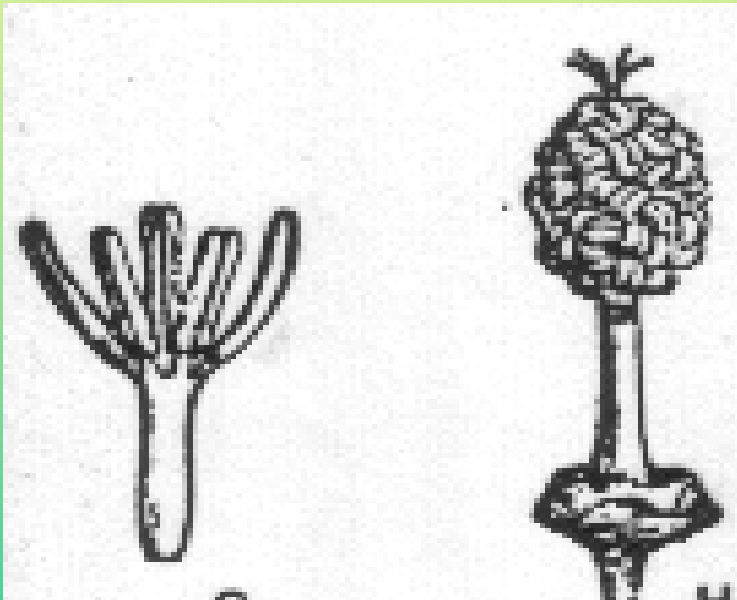


Carena

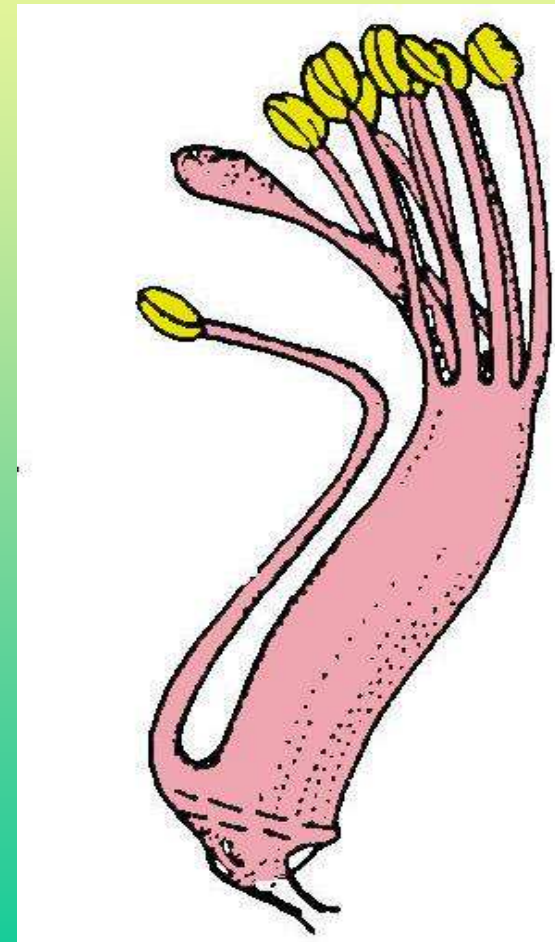
Fam. Fabaceae

Stami: 10, monoadelfi, o diadelfi o liberi

Stami monoadelfi

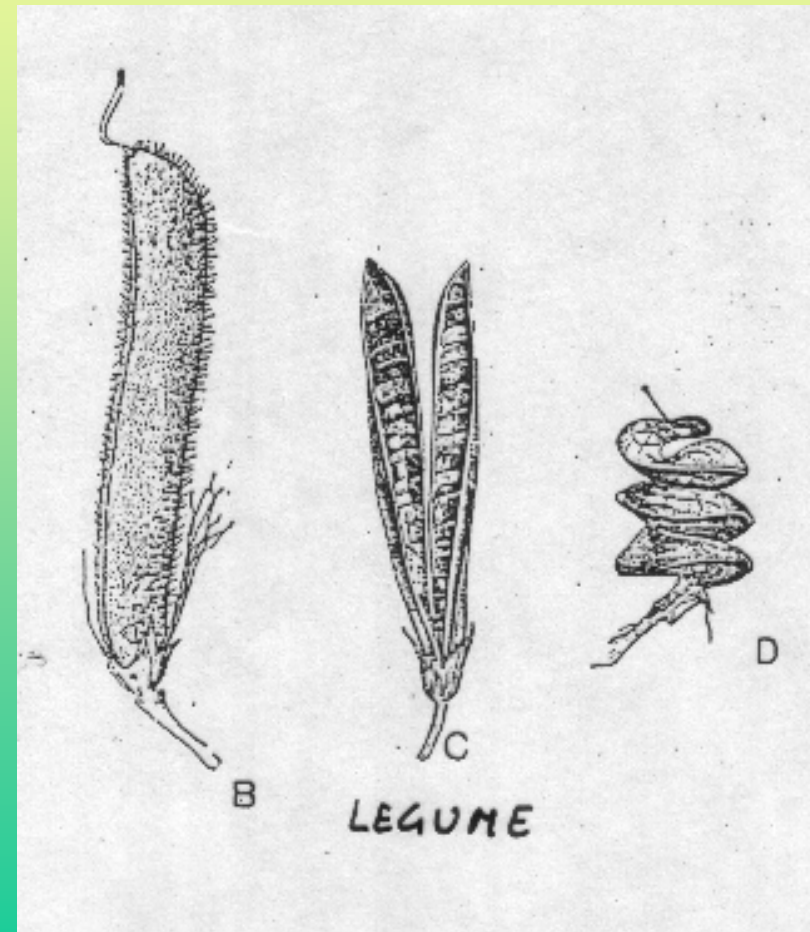
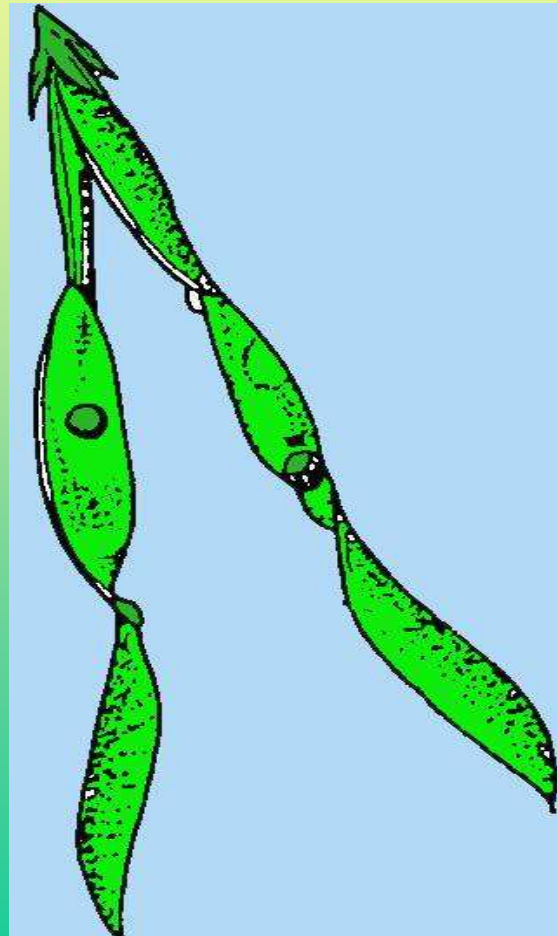
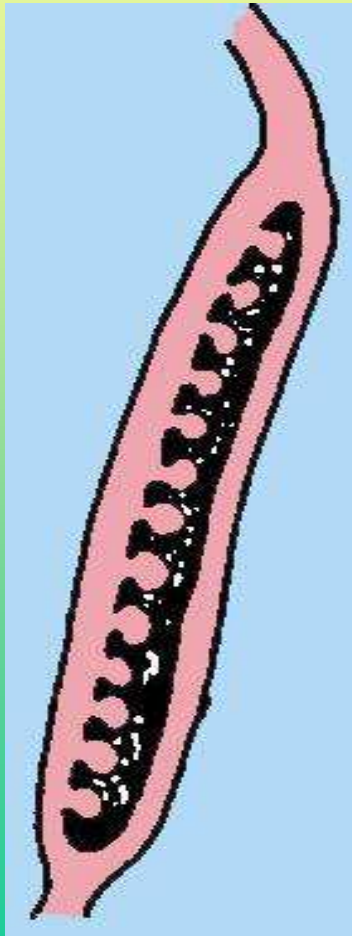


Stami diadelfi



Fam. Fabaceae

Frutto: Legume



Fam. Fabaceae

Habitus: erbaceo, arbustivo o arboreo

Foglie: composte, raramente semplici

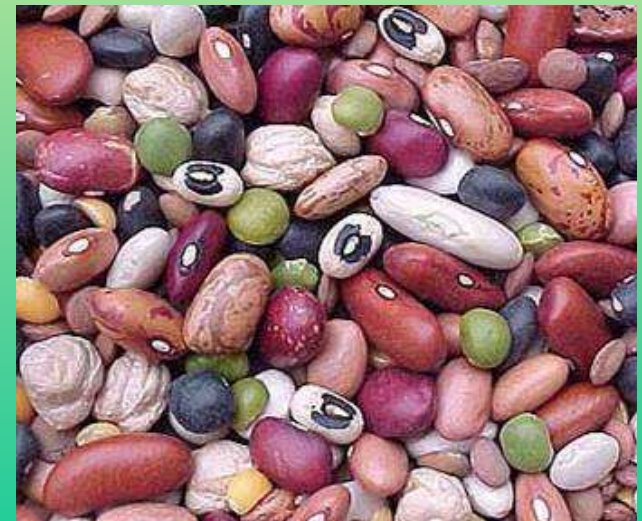
Fiori: pentameri, zigomorfi a corolla papilionacea

Stami: 10, monoadelfi, diadelfi o liberi

Ovario: supero, monocarpellare

Frutto: legume

Phaseolus vulgaris Fagiolo





Pisum sativum Pisello



Cicer arietinum

Cece



Cicer arietinum

Cece



Pods

Cicer arietinum

Cece



Cicer arietinum

Cece



Lathyrus sativus

Cicerchia



Vicia faba

Fava



Vicia faba

Fava



Vicia faba

Fava



Glycine max

Soia



Photo copyright Henriette Kress
<http://www.henriettesherbal.com>

Glycine max

Soia



Glycine max

Soia



Verde

Glycine max

Soia



Gialla

Vigna angularis

Azuki



Lupinus albus

Lupino



Lupinus albus

Lupino

